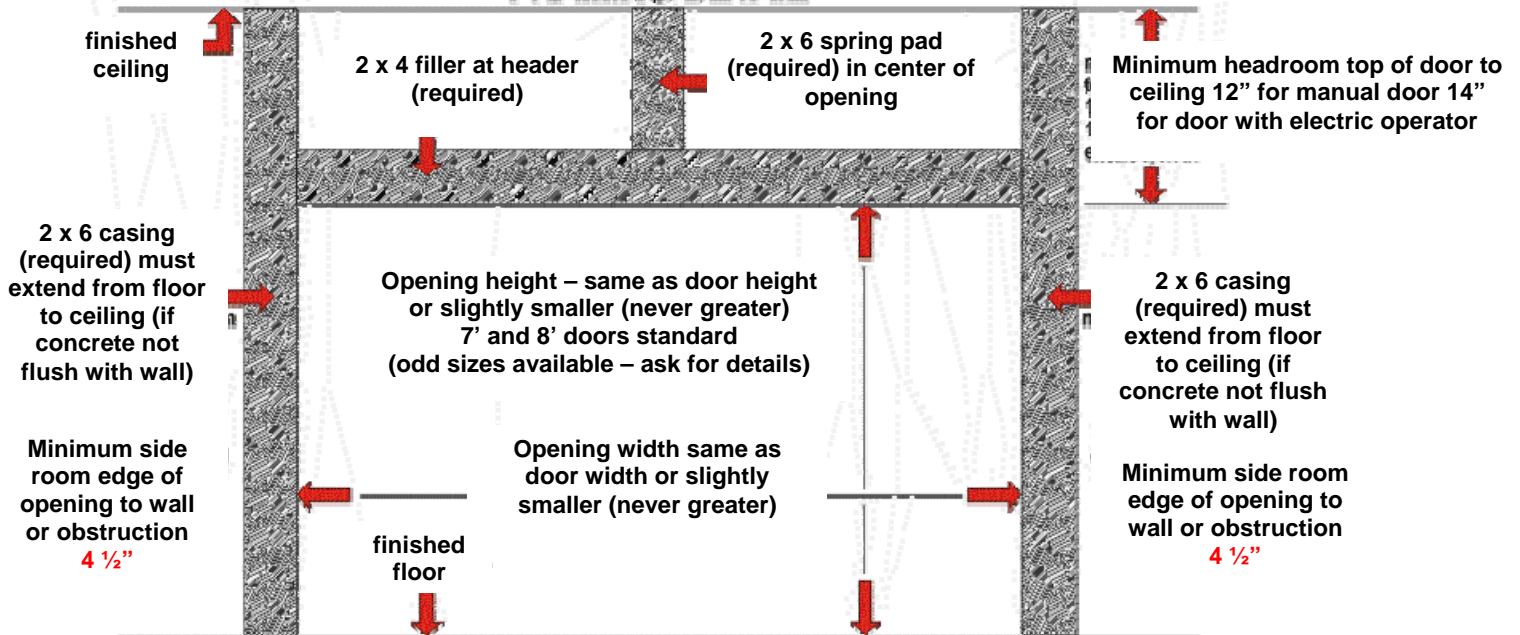


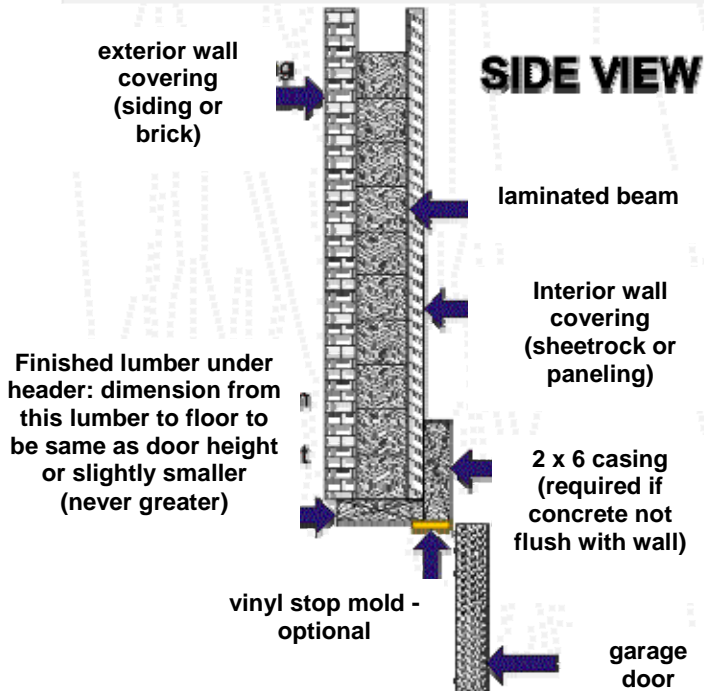
Island OVERHEAD DOOR (1979) LTD.

"The Island's oldest family run door company."

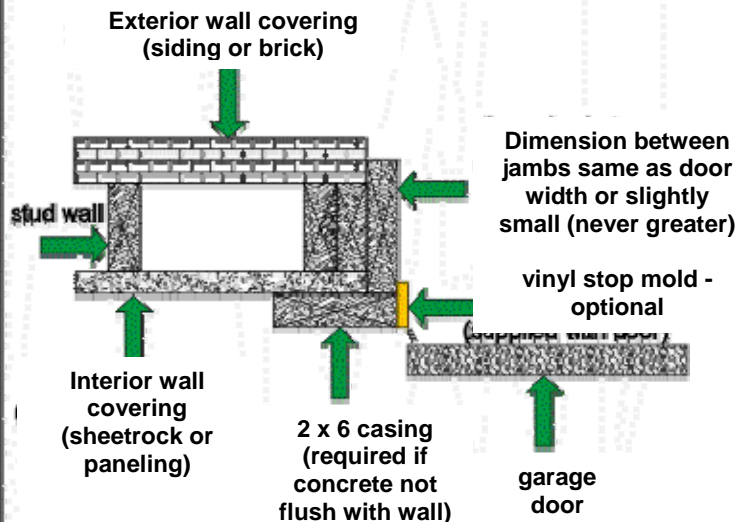
FRAMING DETAIL



SIDE VIEW



OVERHEAD VIEW



FRAMING INSTRUCTION

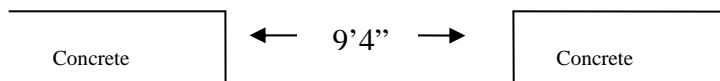
Applies to Residential Doors 8' or under in height

OPENING SIZE

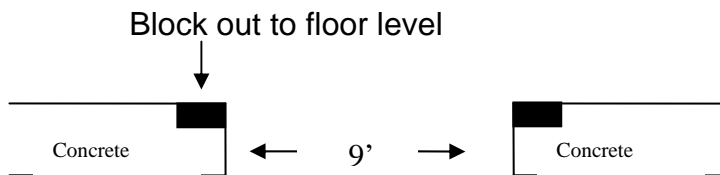
Wood or Steel Sectional Doors

Finishing door opening should be approximately 2" less in width and 1" less in height. Example: finished opening size required for 9 x 7 is 8'10 x 6'11. Rough opening for 9 x 7 – use 2 x 6 around door for finish face.

NOTE: You must have 9'4" between concrete



Where concrete comes higher than floor and a 9' opening between concrete, concrete must be notched out 3" on each side of opening. This enables the track to be set on floor.

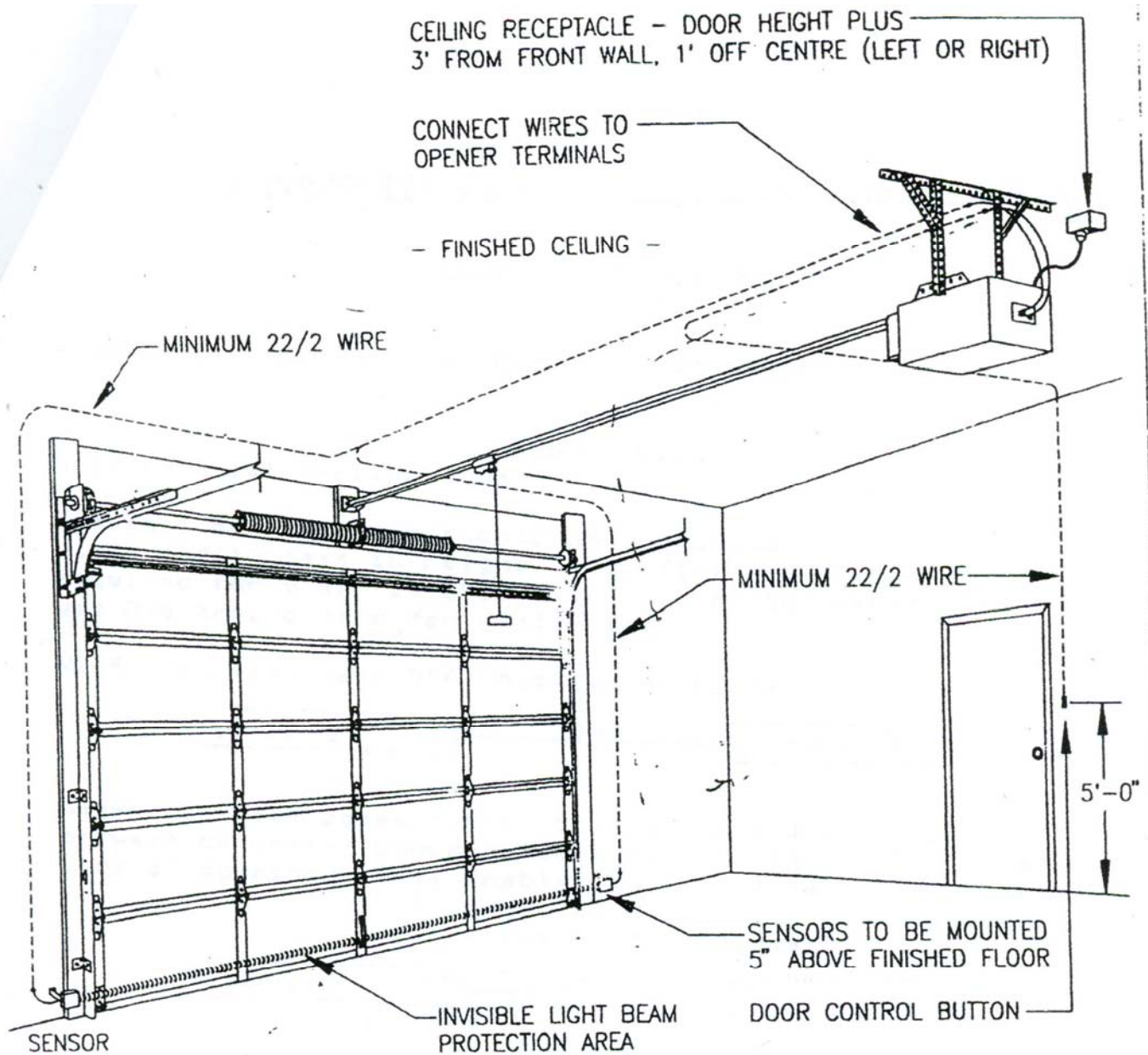


HEADROOM REQUIREMENT

Distance from underside of rough opening header to ceiling:

- 12" Allows standard lift hardware and room for electric opener (depending on style of door)
- 9" Allows standard hardware but NO room for electric opener
- 8" Allows low headroom hardware and room for electric opener
- 6" Allows low headroom hardware and NO room for electric opener
- 3" Allows double track low headroom hardware but NO room for electric opener.

NOTE: 12" is the recommended amount of headroom to work with – 9" is the minimum.



NOTE: 22/2 WIRE TO BE SUPPLIED AND INSTALLED BY ELECTRICAL CONTRACTOR AND SHOULD BE IN PLACE PRIOR TO APPLICATION OF DRYWALL. THE WIRE MUST BE PULLED THROUGH THE DRYWALL ON BOTH SIDES OF THE DOOR, ON THE CEILING AND THE WALL BESIDE THE MAN DOOR.